

Ponto – Freedom of choice in bone anchored hearing care

Ponto – Made for living



oticon
MEDICAL

Ponto – Made for living

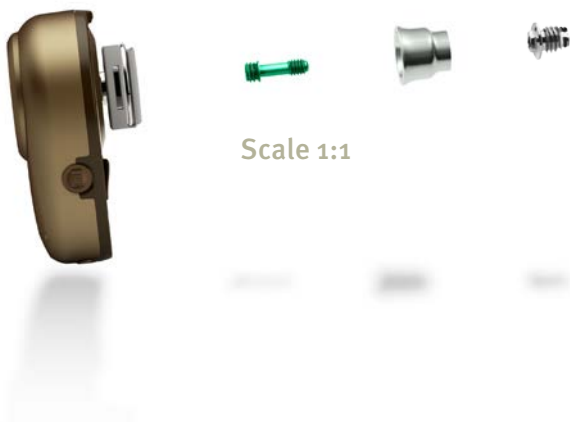
Oticon Medical brings the latest technology to users of bone anchored hearing systems and gives them the opportunity to experience new dimensions in sound quality.

What is a Ponto System?

A Ponto bone anchored hearing system consists of a titanium implant, an abutment and a Ponto sound processor. The implant is carefully implanted in the bone behind the ear. The abutment is then attached to it and allowed to protrude through the skin as an anchor for the sound processor itself.

The Ponto sound processor can easily be connected and disconnected to the abutment. When connected Ponto sound processor picks up sounds and uses the bodies natural ability to transmit sound through bone directly to the inner ear.

Bone anchored hearing systems have been evaluated by clinics and end users worldwide – and these studies show clear improvements in quality of life.





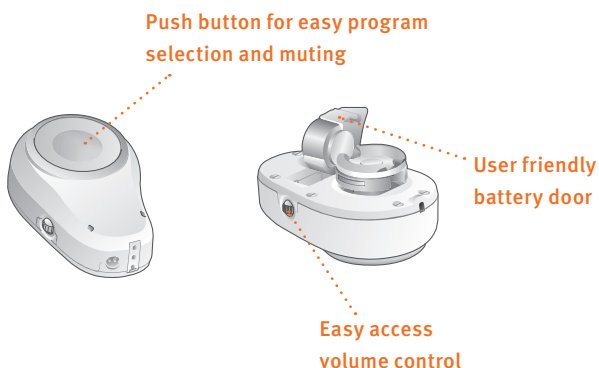
“Being able to experience life on my deaf side is like being in a whole new world.”

Pia Cramer, Ponto Pro user



Designed with users' needs in mind

Ponto sound processors are designed with user needs in mind. An easy-to-access pushbutton makes switching programs or muting the device very simple. And the user friendly battery door makes changing batteries an easy task.



Ponto Pro Power has won the IF product design award 2012, for outstanding quality and design.

“The Ponto sound processor is so simple to use that I can easily wear it 15 hours a day.”

Thomas Soeborg, Ponto Pro user

Great sound quality

We know that great sound quality will make it easier for you to follow conversations and interact more naturally. Therefore all Ponto sound processors are designed to produce a natural-sounding, comfortable listening experience.

Hearing is about being able to communicate freely and effortlessly – even in challenging environments such as meetings, social events and crowded restaurants. Wherever you need the voice of the person in front of you to stand out more clearly – Ponto sound processors automatically focus in on the speaker and cause background noise to fade, so speech becomes easier to hear.

To improve listening comfort the Ponto sound processors constantly analyse the environment to reduce uncomfortable noise while still protecting important speech information.

“In my opinion the sound quality couldn’t be better.”

Peder Soerensen, Ponto Pro Power user

“I don’t need to spend a lot of energy on listening at large gatherings. The sound just comes to me.”

Irene Holm-Nielsen, Ponto Pro Power user





Designed for daily life activities

Thanks to an automatic wind noise reduction system, you will be able to wear your Ponto sound processor outdoor with less disturbance from wind noise.

“With the Ponto sound processor there is less wind noise, and the overall sound quality is much better both indoors and outdoors.”

Thomas Soeborg, Ponto Pro user

All Ponto sound processors are fully compatible with mobile phones and wireless landline phones, so you can enjoy mobile communication without fear of noise or distortion.

The most unpopular sound a hearing aid can make is a whistling tone – otherwise known as feedback. This can happen when adjusting the volume or brushing your hair. Fortunately, Ponto sound processor is designed to reduce the risk of feedback.

“Being able to actually answer calls rather than just using my phone for texting is something I have to get used to.

It’s a whole new world.”

Lone Mindbjerg, Ponto Pro user

What about reliability?

Ponto sound processors are thoroughly tested to confirm their ability to support an active lifestyle. A special nanocoating offers empowered resistance against water, moisture and dirt from entering the sound processor. And the strong metal spring coupling on the sound processor and the abutment is designed to withstand the rigours of daily connection and disconnection to the abutment without breaking down or impairing the sound quality.



*Water resistant
nanocoating*



*Durable and
reliable*

Oticon Medical will always be there for you

Oticon Medical combines long experience from bone anchored hearing implants with a world leading sound processing team from Oticon, one of the world's greatest producers of hearing aids. This gives us unique possibilities to bring better technology to users of bone anchored hearing systems – both now and in the future.

Useful links

Find more valuable information on bone anchored hearing systems and access to discussion forums for users by visiting the websites listed below:

www.oticonmedical.com

Oticon Medical – website with user stories, product information and brochure download

www.baha-users-support.com

The Ear Foundation – BAHA User Support forum (formerly BUSK). Direct link to online forum for users of bone anchored hearing systems

www.earfoundation.org.uk/baha

The Ear Foundation – English organisation for people with hearing implants

www.bana-uk.com

British Acoustic Neuroma Association – Support charity for those with acoustic neuroma

www.facebook.com

– search for “**Microtia-and-Atresia-Support-Group**”

Microtia & Atresia Support Group – Support chain for those who have and know loved ones with the congenital deformity called microtia and atresia

You might also find useful information on social media, for example www.facebook.com where several user groups are active.



Oticon Medical has played a key role in revolutionising the field of bone anchored hearing care. With user needs as our driving force, and the most sophisticated sound technology as our means, we aim to empower and bring freedom of choice to users of bone anchored hearing systems.



Manufacturer:

Oticon Medical AB

Datavägen 37B – SE-436 32 Askim – Sweden

Phone: +46 31 748 61 00 – info@oticonmedical.com

Office locations:

United Kingdom

Oticon Medical – Cadzow Industrial Estate – Low Waters Road
Hamilton, ML3 7QE – United Kingdom

Phone: +44 1698 208 234 – info@oticonmedical.co.uk

Israel

Medton Ltd. – 51 Ben Yehuda Street

Tel Aviv 63431 – Israel

Phone: +972 3 620 3992 – info@oticonmedical.co.il

South Africa

Oticon Medical – Warich Office Close, 39 Van Vuuren Street
Constantia Kloof 1709, Gauteng – South Africa

Phone: +27 11 675 6104 – info@oticonmedical.co.za

What to expect from a Ponto System

– For new and experienced users

